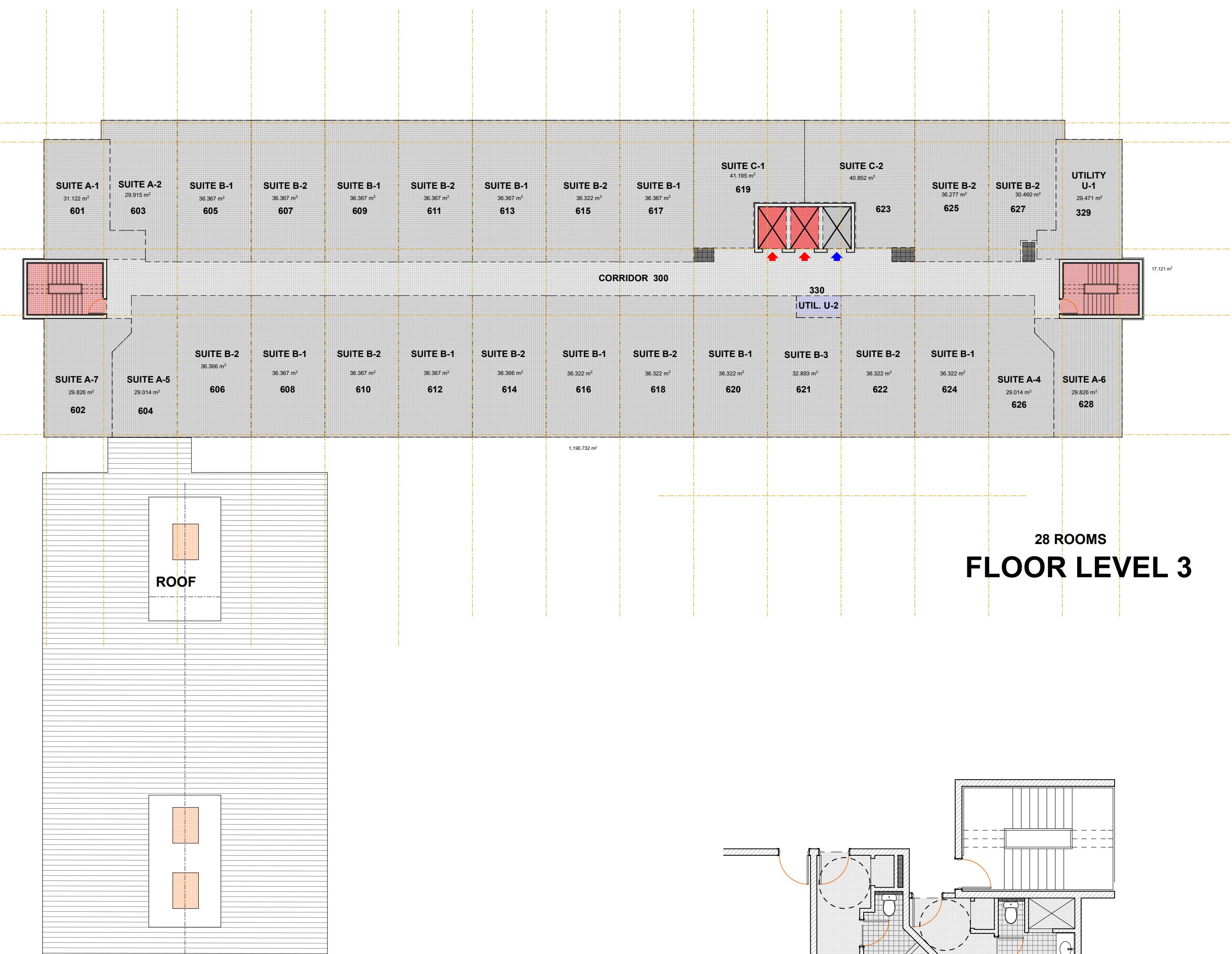
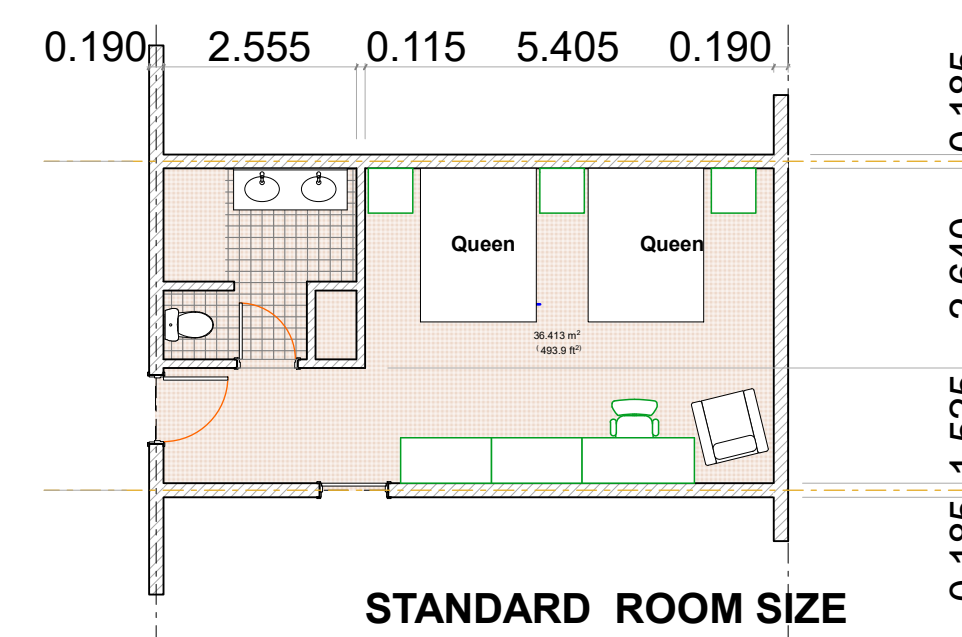


**SECOND FLOOR PLAN**

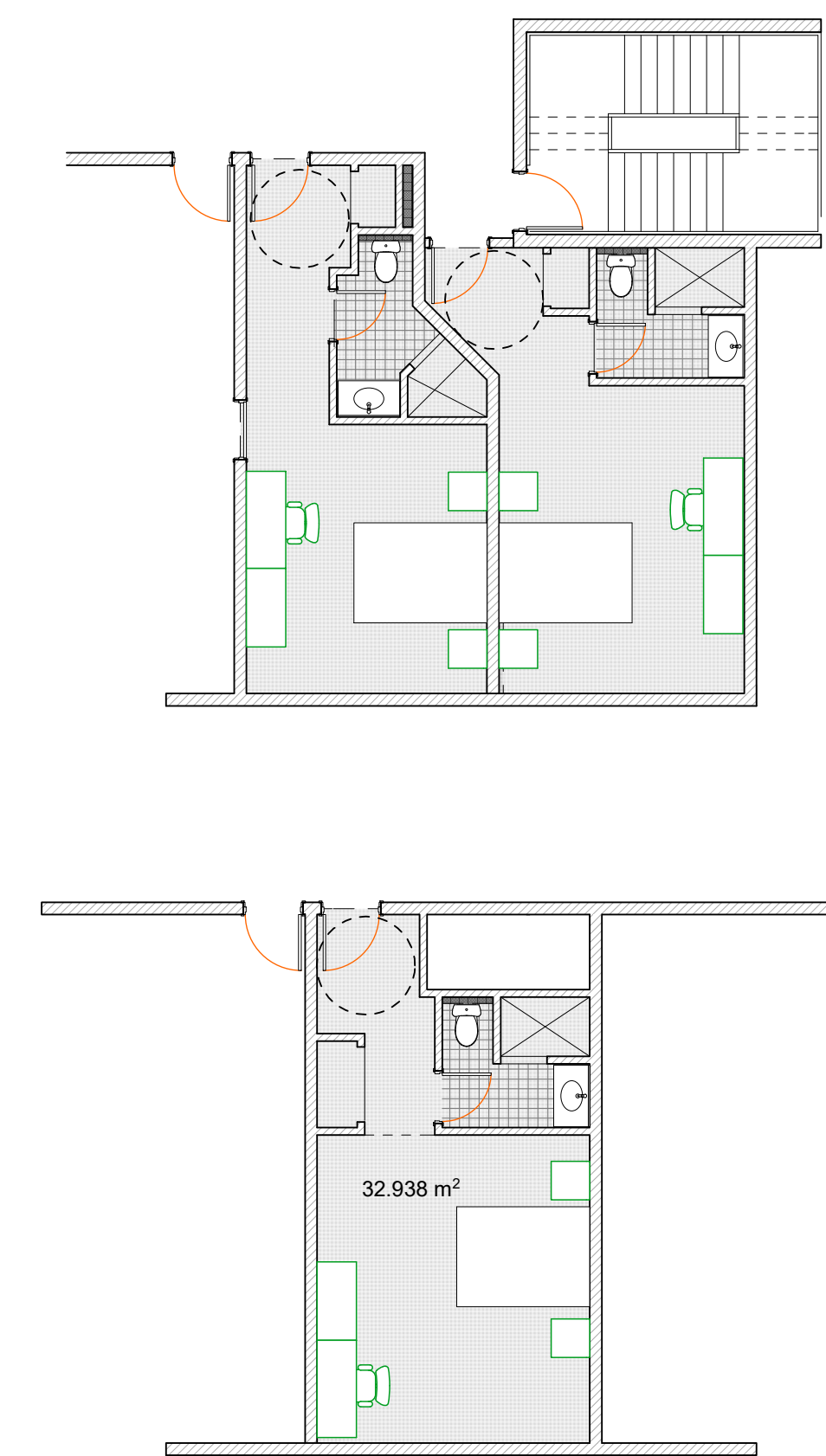
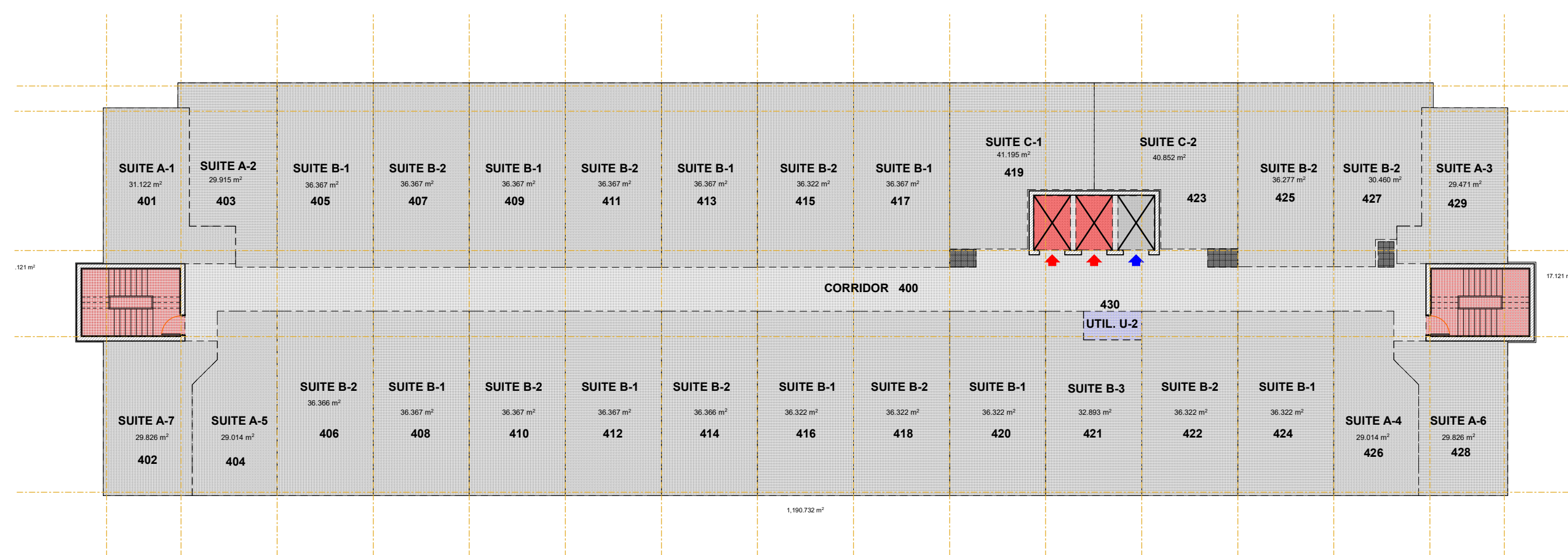


**THIRD FLOOR PLAN**



**TYPICAL SUITE LAYOUTS**

1:100



SUBMISSION FOR ZONING AMENDMT. 13 OCT 17 RM

CLIENT COMMENT 10 OCT 17

CLIENT COMMENT

Issue Issued for Date Issued

Do not scale drawings. Report any discrepancies to Quartek Group Inc. before proceeding.  
Drawings must be sealed by the Architect and / or Engineer prior to the use for any building permit applications and / or government approval. Seals must be signed by the Architect and / or Engineer before drawings are used for any construction.  
All construction to be in accordance with the current Ontario Building Code and all applicable Ontario regulations.  
All drawings and related documents remain the property of Quartek Group Inc. all drawings are protected under copyright and under contract.



Architects Planners  
Engineers Project Managers  
T: 905.984.8476  
89 - 91 St. Paul Street, Suite 100,  
St. Catharines, ON, L2R 3M3  
www.quartekgroup.com



**TWO SISTERS**  
*Vineyards*

Project Title

**Randwood  
Resort HOTEL**

Drawing Title

UPPER FLOOR PLANS

Drawn by

RM

Designed by

RM

Scale

1:200 UNLESS OTHERWISE NOTED

Date Created

Job Number

16332

Issue

R1

Drawing Number

**A1-2**





# LEVEL P-1

REVISED per New Loading/Access Changes

Issue: \_\_\_\_\_  
 Issued for: \_\_\_\_\_  
 Date: \_\_\_\_\_  
 Drawn by: \_\_\_\_\_  
 Checked by: \_\_\_\_\_

Do not scale drawings. Report any discrepancies to Quartek Group Inc. before proceeding.  
 Drawings must be sealed by the Architect and / or Engineer prior to the use for any building permit applications and / or government approval. Seals must be signed by the Architect and / or Engineer before drawings are used for any construction.  
 All construction to be in accordance with the current Ontario Building Code and all applicable Ontario regulations.  
 All drawings and related documents remain the property of Quartek Group Inc. all drawings are protected under copyright and under contract.

**Quartek**  
 Architects • Planners  
 Engineers • Project Managers  
 T: 905.984.8476  
 89 - 91 St. Paul Street, Suite 100,  
 St. Catharines, ON, L2R 3M3  
 www.quartekgroup.com



## TWO SISTERS Vineyards

Project Title  
**Randwood Resort**

SOLMAR Developments  
**PARKING LEVEL 1**  
 SUB-LEVEL HOTEL BASEMENT

Drawn by: \_\_\_\_\_  
 Designed by: \_\_\_\_\_

Scale: \_\_\_\_\_  
 Date Created: \_\_\_\_\_  
**1:500**

Job Number: \_\_\_\_\_  
 Issue: \_\_\_\_\_

Drawing Number  
**A1- 5**





# LEVEL P-2

SUBMISSION FOR ZONING AMENDMT. 13 OCT 17 RM

CLIENT COMMENT	5 OCT 17		
CLIENT COMMENT	31 MAY 17		
Issue	Issued for	Date	Int.

Do not scale drawings. Report any discrepancies to Quartek Group Inc. before proceeding.  
 Drawings must be sealed by the Architect and / or Engineer prior to the use for any building permit applications and / or government approval. Seals must be signed by the Architect and / or Engineer before drawings are used for any construction.  
 All construction to be in accordance with the current Ontario Building Code and all applicable Ontario regulations.  
 All drawings and related documents remain the property of Quartek Group Inc. all drawings are protected under copyright and under contract.

**Quartek**  
 Architects • Planners  
 Engineers • Project Managers  
 T. 905.984.8476  
 89 - 91 St. Paul Street, Suite 100,  
 St. Catharines, ON, L2R 3M3  
 www.quartekgroup.com



## TWO SISTERS Vineyards

Project Title  
**Randwood Resort HOTEL**

### PARKING LEVEL 2

Drawn by	Designed by
Scale	Date Created
1:200	
Job Number	Issue
Drawing Number	<b>A1-6</b>