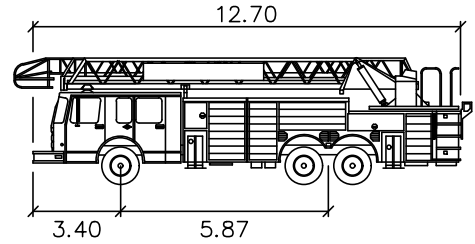
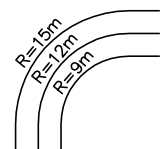
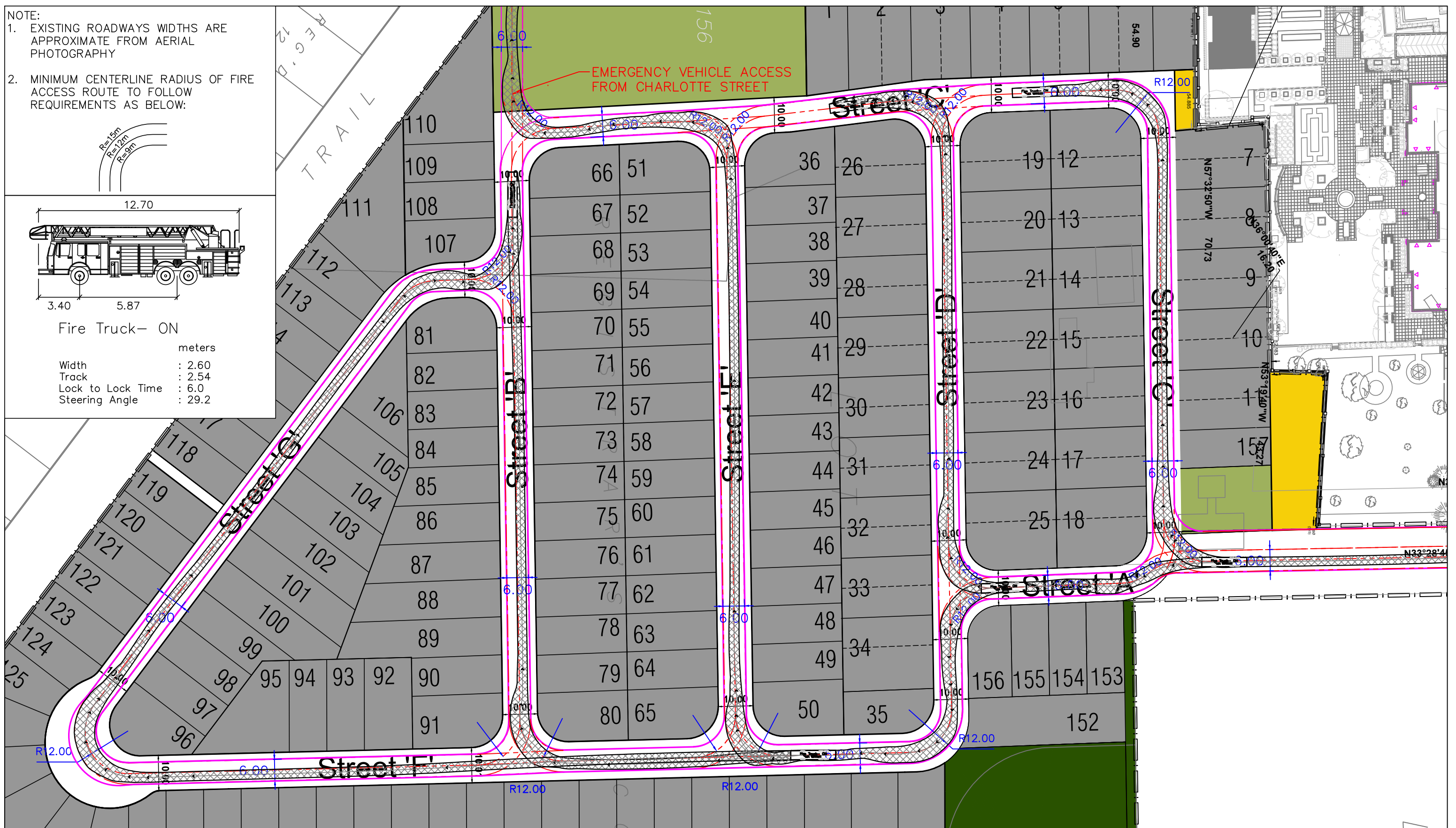


- NOTE:
- EXISTING ROADWAYS WIDTHS ARE APPROXIMATE FROM AERIAL PHOTOGRAPHY
 - MINIMUM CENTERLINE RADIUS OF FIRE ACCESS ROUTE TO FOLLOW REQUIREMENTS AS BELOW:



Fire Truck – ON

	units	meters
Width	:	2.60
Track	:	2.54
Lock to Lock Time	:	6.0
Steering Angle	:	29.2



DRAWN BY: D.T. PLOT DATE: September 11, 2020

LEA Consulting Ltd.
 Consulting Engineers and Planners
www.LEA.ca

Project No.
18145

Date
SEPT. 11, 2020

200 JOHN STREET & 588 CHARLOTTE
 NIAGARA-ON-THE-LAKE ONTARIO

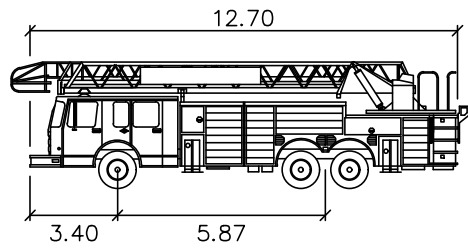
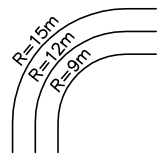
1:1000

SITE PLAN – FIRE ROUTE

Drawing No.
001

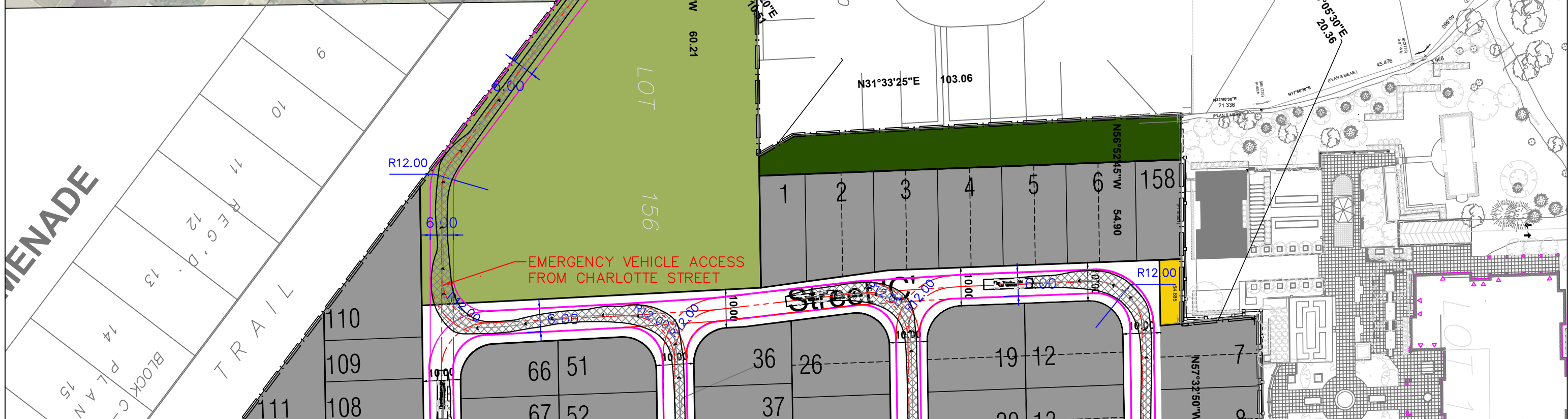
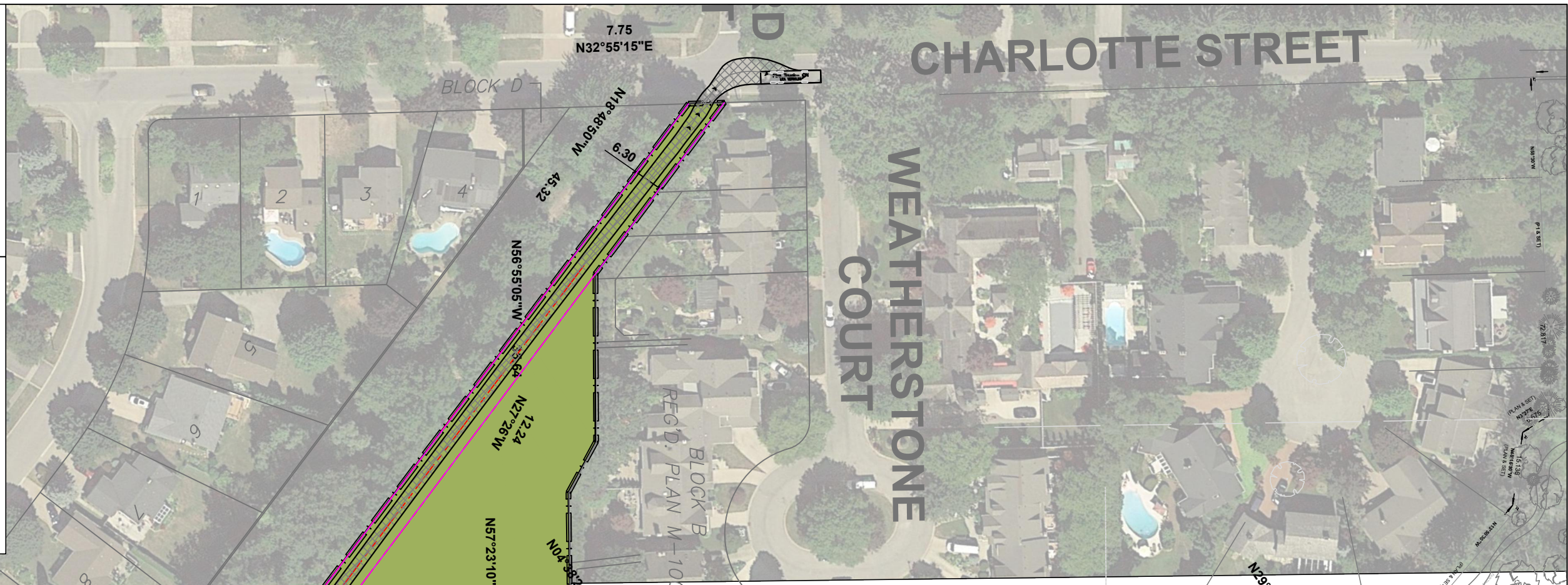
NOTE:

- EXISTING ROADWAYS WIDTHS ARE APPROXIMATE FROM AERIAL PHOTOGRAPHY
- MINIMUM CENTERLINE RADIUS OF FIRE ACCESS ROUTE TO FOLLOW REQUIREMENTS AS BELOW:



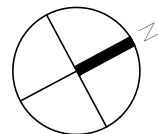
Fire Truck- ON

	units
Width	: 2.60
Track	: 2.54
Lock to Lock Time	: 6.0
Steering Angle	: 29.2



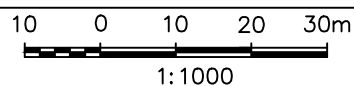
DRAWN BY: D.T. PLOT DATE: September 11, 2020

LEA Consulting Ltd.
Consulting Engineers
and Planners
www.LEA.ca



Project No.
18145
Date
SEPT. 11, 2020

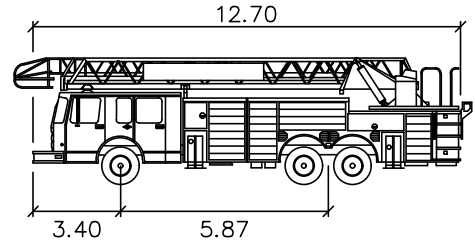
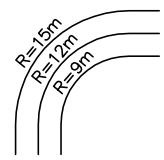
200 JOHN STREET & 588 CHARLOTTE
NIAGARA-ON-THE-LAKE ONTARIO



SITE PLAN - FIRE ROUTE
ACCESS FROM CHARLOTTE STREET

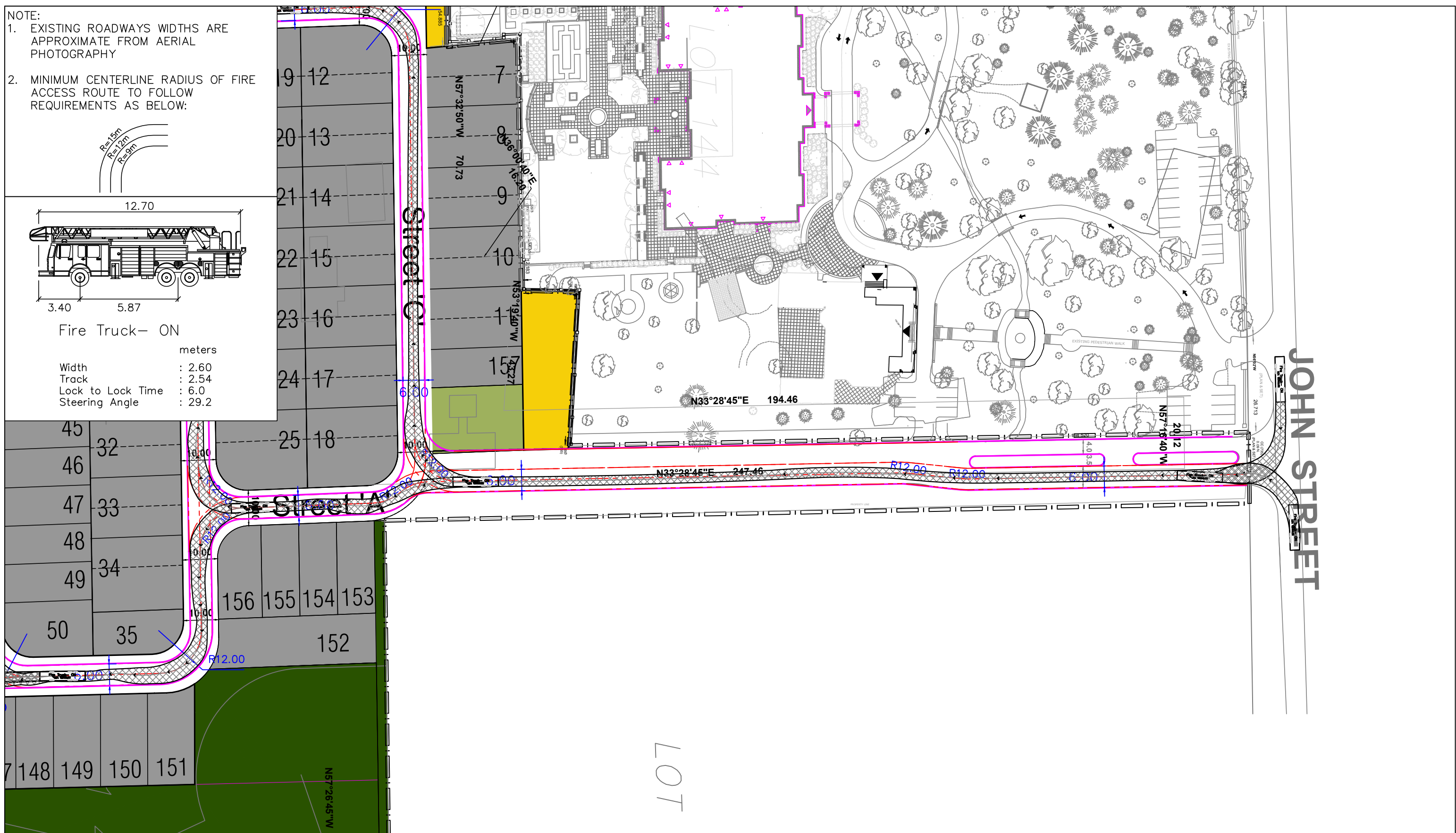
Drawing No.
002

- NOTE:
- EXISTING ROADWAYS WIDTHS ARE APPROXIMATE FROM AERIAL PHOTOGRAPHY
 - MINIMUM CENTERLINE RADIUS OF FIRE ACCESS ROUTE TO FOLLOW REQUIREMENTS AS BELOW:



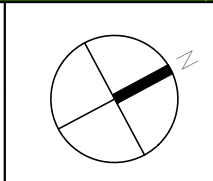
Fire Truck – ON

	units
Width	: 2.60
Track	: 2.54
Lock to Lock Time	: 6.0
Steering Angle	: 29.2



DRAWN BY: D.T. PLOT DATE: September 11, 2020

LEA Consulting Ltd.
 Consulting Engineers and Planners
www.LEA.ca



Project No.
18145

Date
SEPT. 11, 2020

200 JOHN STREET & 588 CHARLOTTE
 NIAGARA-ON-THE-LAKE ONTARIO

1:1000

SITE PLAN – FIRE ROUTE
 ACCESS FROM JOHN STREET

Drawing No.
003